

SJT-CCZP-X-V1



1

SJT-CCZP-X-V1

SJT-CCZP-X-V1

SJT-CCZP-X-V1

1.1

EMC

1.2

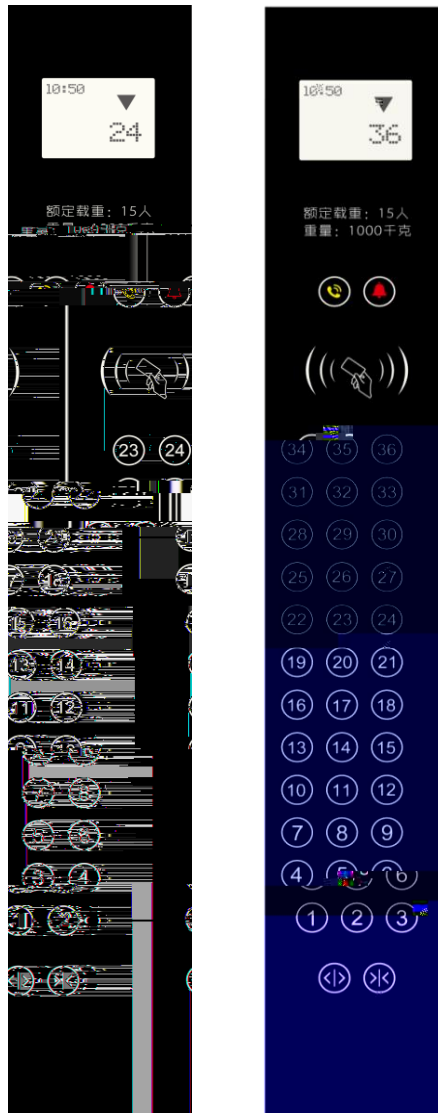
-10 ~ +60  
95%RH

2

2.1

SJT-CCZP-X-V1

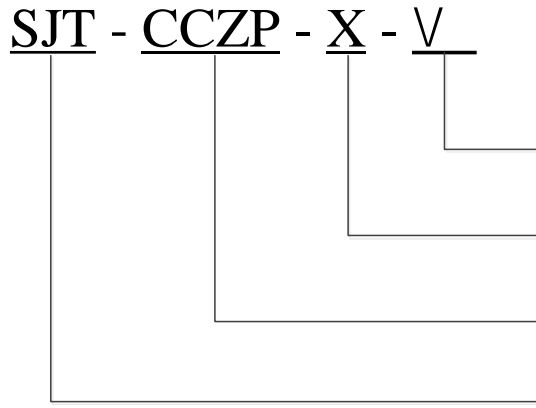
2-36 35



2.1

- 1
- 2

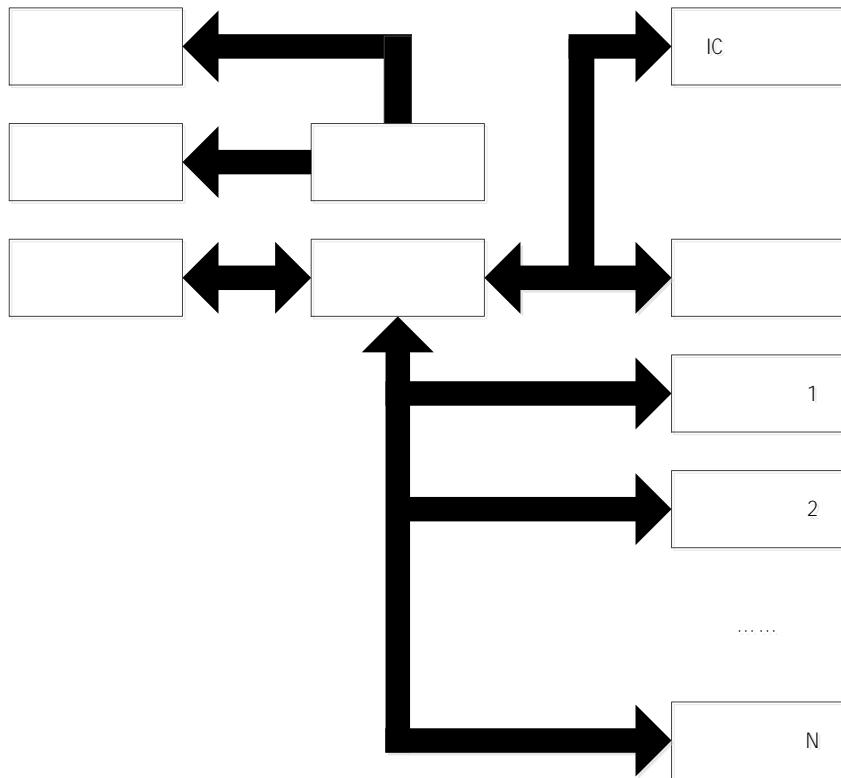
2.2



5.6—5.6  
6.4—6.4  
8—8

2.2

2.3



2.3



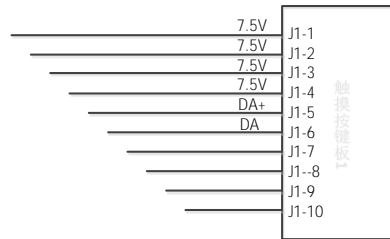
2.5

2.2

1		
2		
3		
4		/ /
5		
6		
7	IC	IC
8		
9		

3

3.1



## 3.2

1 BL2000-MCZB-V1. x

3.1



2                      SJT-MB12-CV1.2  
SJT-MB32-CV1.1   SJT-MB23-CV1.2

SJT-MB13-CV1.1   SJT-MB31-CV1.1

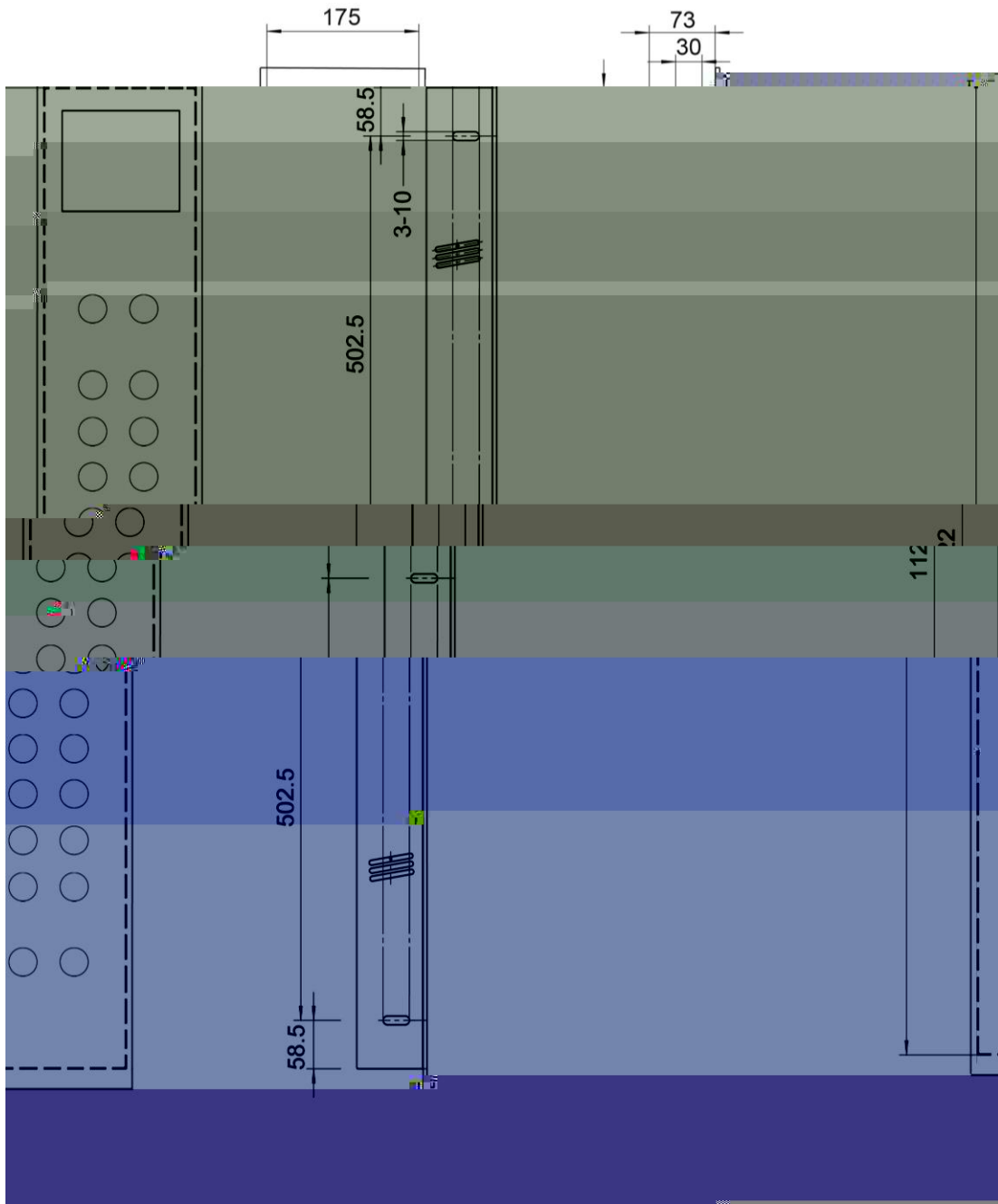
3.2

J1	J1-1~J1-4	7.5V	
	J1-5	DA+	
	J1-6	DA-	

4

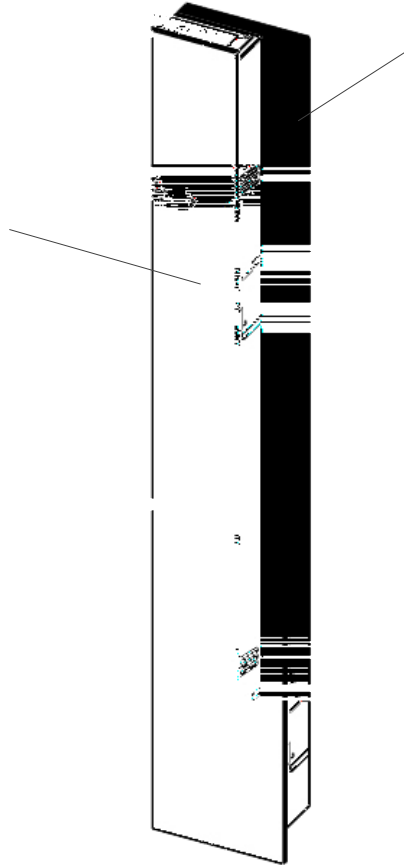
4.1

mm



4.1

4.2



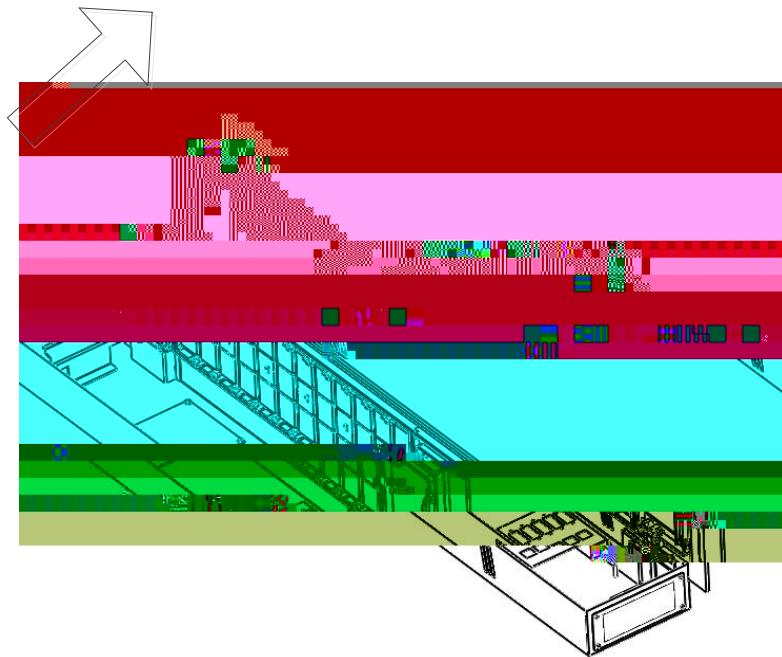
4.2

4.3

- 1
- 2

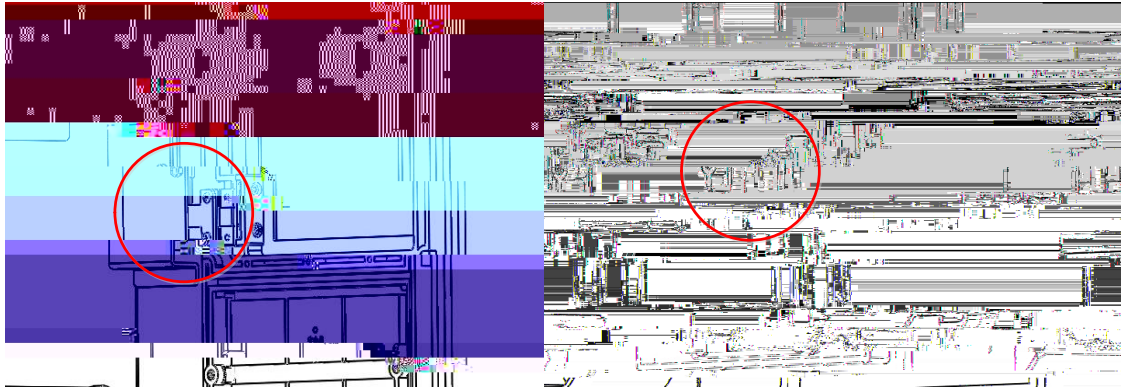
4.3

- 3



4.4





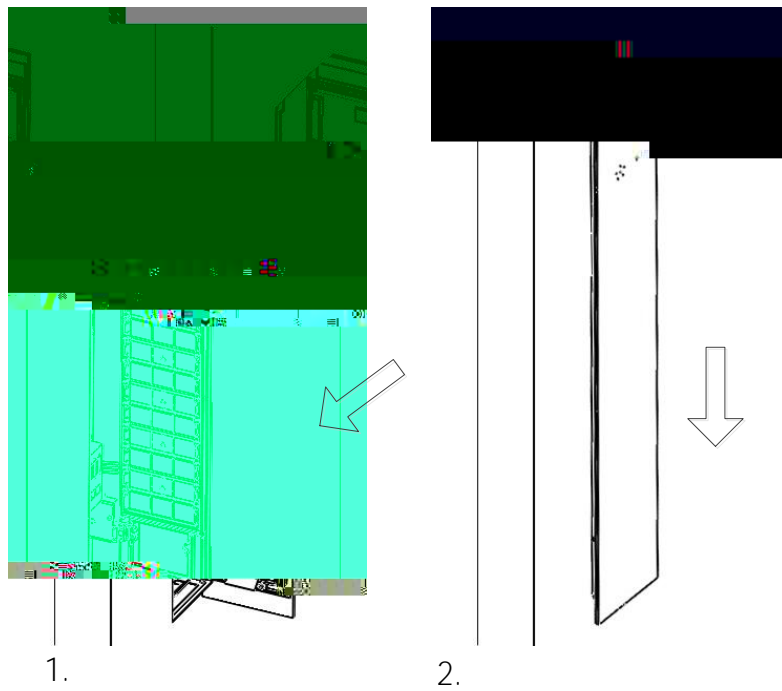
4.7

8

IC

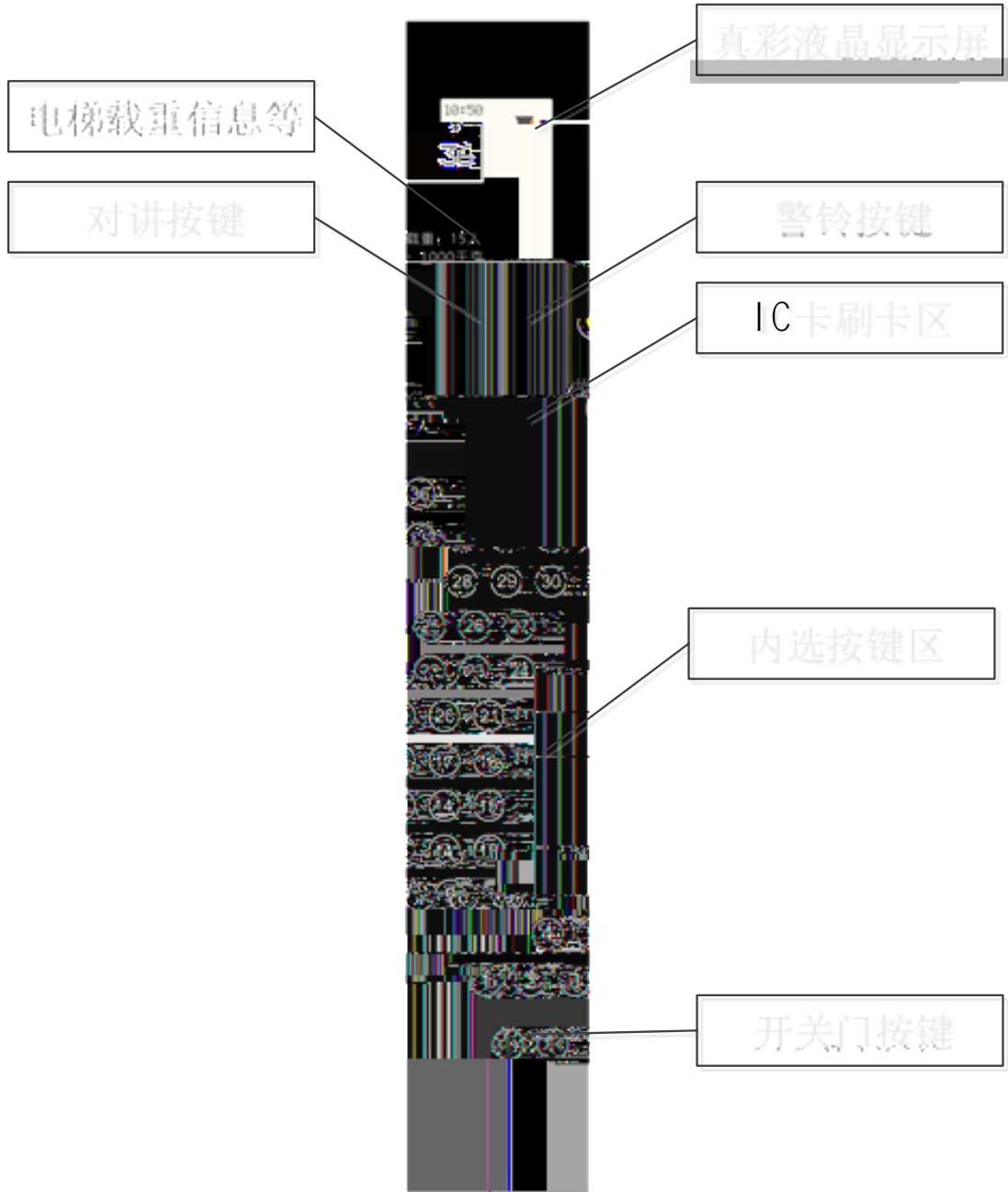
7

9



4.8

5



5.1

6

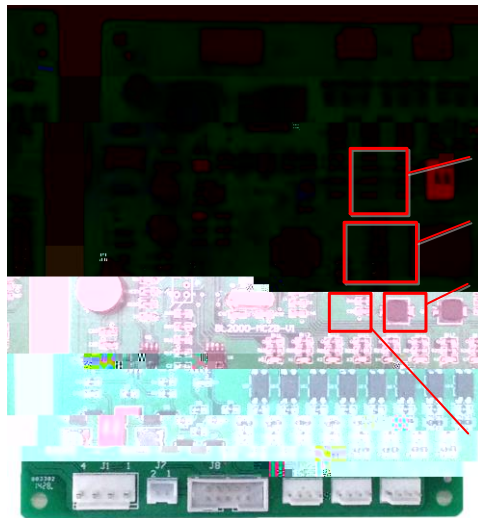
BL2000-JDB-Vn

6.1

BL2000-JDB-V1. x		
SW1. 1	SW1. 2	
ON	ON	
BL2000-JDB-V6. x		
" 6.3	" 5	" 1

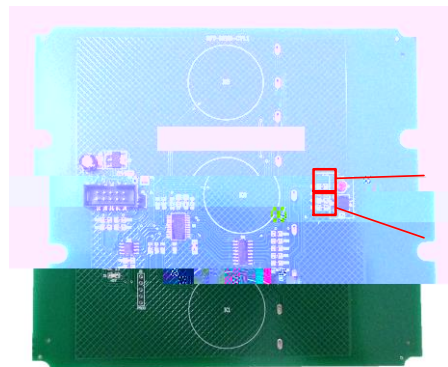
6.1

KS      LS                      SW                      LD    K1    K2



SW  
LD  
K2  
K1

6.1



LS  
KS





6.2

6.2

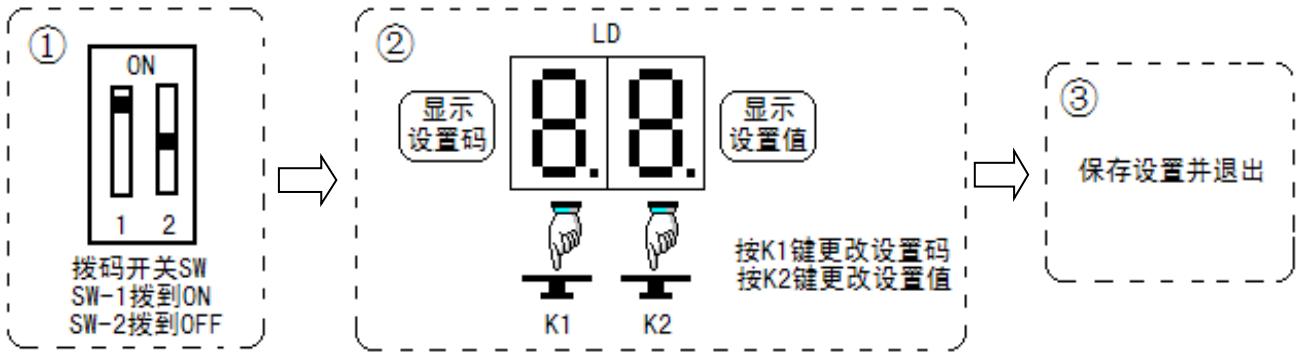
1

SW

6.2

SW			
	OFF OFF		
	ON OFF		
	OFF ON		
	ON ON		

2

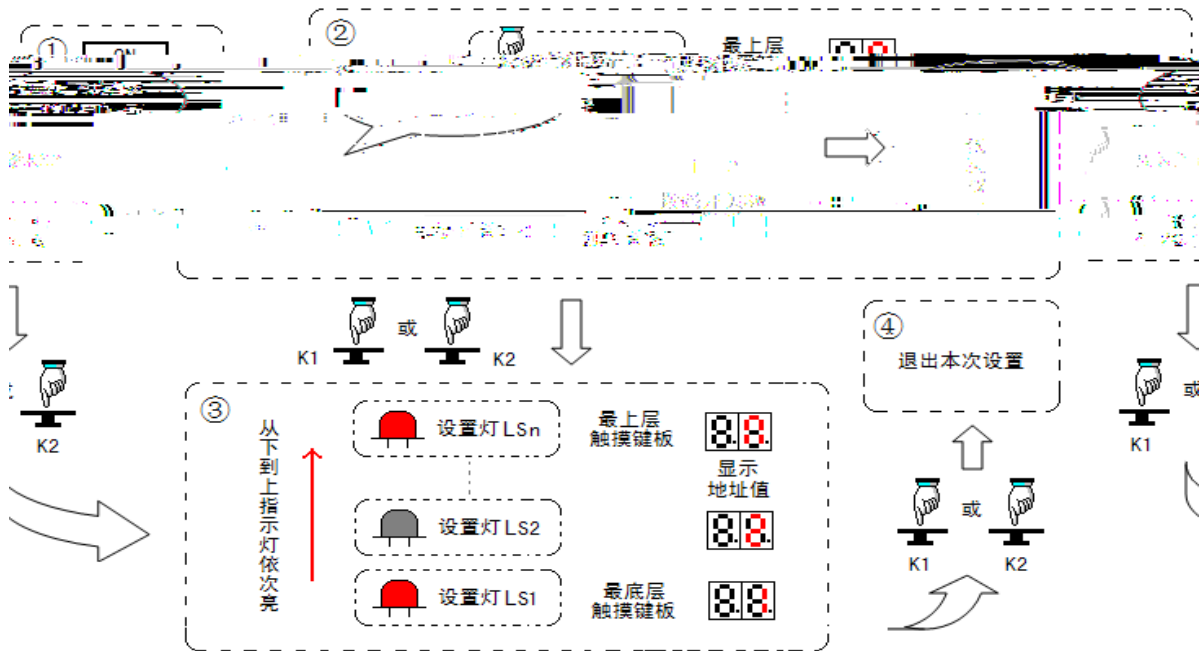


SW-1      ON      SW-2      OFF  
 K1                      K2

6.3

0	0				
	1				
	2				
	3				
1 IC	0				
	1 CAN IC		CAN	IC	
	2 IC		IC	BY0	
2	0				
	1				
	2 -PWM				
A			K2 3	0 " 3-2-1-0"	
C IC			K2 3	0 " -"	
				IC	
				/	
			K2 3	0 " 3-2-1-0"	

3



SW-1    OFF    SW-2    ON

K1    K2  
1

1

1  
K1    K2

LD            1            1  
LD            1            2

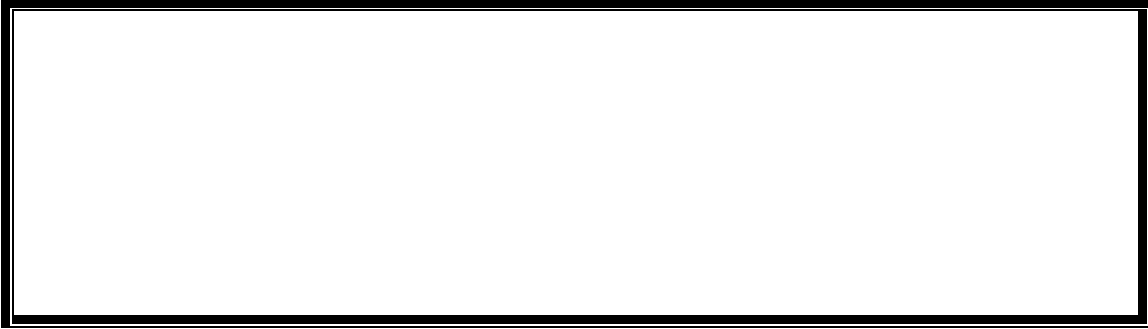
K1    K2            " - - "





7

7.1



7.2

- 1
- 2
- 3

7.3

7.1 ( 1 )

	1. 2.	1. 2.
	1. 2.	1. 2.
	1.	
	1. 2. 3. 4. 5.	

8

18

- 1.
- 2.
- 3.
- 4.

---

V1.0	2014.10.11	804_30
V1.1	2015.06.01	6.3 804_31
V1.2	2015.07.10	" "
		804_32
V1.3	2015.07.29	
V1.4	2018.06.04	

99

024-23782971

024-23782973

www.sylg.cn